

Minnesota State Colleges and Universities

State Farm Business Management Program Database

Crop Financial Sorts - 2010

Financial Summary
Financial Standards Measures
Crop Production and Marketing Summary
Enterprise Information

Location of the Regional Program Center:

Minnesota Region:

Central Lakes Community and Technical College	Northeast and East Central
Minnesota West Community and Technical College	Southwestern
Northland Community and Technical College	Northwestern & Red River Valley
Ridgewater Community and Technical College	Central and West Central
Riverland Community and Technical College	Southeastern
South Central College	South Central

April, 2011



A MEMBER OF THE MINNESOTA STATE COLLEGES
AND UNIVERSITIES SYSTEM

In cooperation with the Center for Farm Financial Management University of Minnesota

For more information, contact Dr. Richard Joerger at richard.joerger@so.mnscu.edu

For more Information go to
Farm Management Program Website: <http://www.fbm.mnscu.edu/>

Financial Summary
Statewide Database Special Sorts for Crops
Farm Business Management Combined Database
(Farms Sorted By Gross Farm Income)

	Avg. Of All Farms	50,001 - 100,000	100,001 - 250,000	250,001 - 500,000	500,001 - 1,000,000	Over 1,000,000
Number of farms	1282	66	205	353	395	235
Income Statement						
Gross cash farm income	656,020	77,124	175,047	367,346	718,353	1,641,065
Total cash farm expense	511,288	62,182	139,217	295,591	555,259	1,268,284
Net cash farm income	144,732	14,942	35,829	71,755	163,095	372,781
Inventory change	131,653	10,105	41,657	90,205	142,468	302,115
Depreciation	-43,226	-4,976	-11,607	-25,478	-48,905	-103,326
Net farm income from operations	233,158	20,071	65,879	136,482	256,657	571,571
Gain or loss on capital sales	1,676	8	203	3,185	881	2,771
Average net farm income	234,835	20,078	66,082	139,668	257,537	574,342
Median net farm income	161,229	17,739	60,686	128,646	238,129	535,080
Profitability (cost)						
Rate of return on assets	13.90%	5.90%	11.50%	12.70%	13.60%	15.10%
Rate of return on equity	20.80%	7.90%	17.90%	19.40%	19.90%	22.70%
Operating profit margin	28.70%	20.60%	28.10%	28.50%	28.40%	29.10%
Liquidity & Repayment (end of year)						
Current assets	654,015	65,665	165,480	379,246	713,561	1,631,212
Current liabilities	300,872	31,952	74,731	178,678	329,247	742,625
Current ratio	2.17	2.06	2.21	2.12	2.17	2.2
Working capital	353,144	33,713	90,749	200,568	384,313	888,587
Working capital to gross inc	46.30%	39.70%	43.50%	45.50%	45.90%	47.30%
Term debt coverage ratio	3.55	2.35	2.89	3.31	3.46	3.86
Replacement coverage ratio	2.85	1.87	2.31	2.58	2.73	3.18
Solvency (end of year at cost)						
Number of farms	1,282	66	205	353	395	235
Total farm assets	1,691,824	315,412	540,921	1,058,677	1,873,123	3,903,020
Total farm liabilities	714,997	184,145	264,891	477,997	763,718	1,600,101
Total assets	1,896,303	462,567	694,963	1,256,502	2,092,503	4,162,184
Total liabilities	767,738	251,122	304,619	521,485	818,352	1,672,426
Net worth	1,128,564	211,445	390,344	735,017	1,274,152	2,489,758
Net worth change	199,648	32,134	61,527	125,619	210,029	480,922
Farm debt to asset ratio	42%	58%	49%	45%	41%	41%
Total debt to asset ratio	40%	54%	44%	42%	39%	40%
Solvency (end of year at market)						
Number of farms	1,282	66	205	353	395	235
Total farm assets	2,189,957	484,415	763,257	1,428,339	2,464,555	4,817,134
Total farm liabilities	951,468	224,940	335,886	620,840	1,037,748	2,138,558
Total assets	2,432,592	658,625	944,967	1,659,275	2,736,648	5,112,725
Total liabilities	1,018,604	297,808	381,401	674,387	1,108,425	2,240,368
Net worth	1,413,988	360,817	563,566	984,888	1,628,223	2,872,357
Net worth change	216,615	35,178	76,367	140,175	229,881	503,093
Farm debt to asset ratio	43%	46%	44%	43%	42%	44%
Total debt to asset ratio	42%	45%	40%	41%	41%	44%
Nonfarm Information						
Net nonfarm income	33,389	53,715	34,732	38,314	28,234	25,482
Farms reporting living expenses	379	21	69	114	119	48
Total family living expense	57,642	47,871	49,904	52,333	62,697	75,260
Total living, invest, cap. purch	89,536	59,736	71,694	76,198	100,627	137,234
Crop Acres						
Total acres owned	305	101	165	237	369	509
Total crop acres	1,114	137	349	685	1,266	2,565
Total crop acres owned	282	74	134	215	339	504
Total crop acres cash rented	801	62	186	442	895	2,013
Total crop acres share rented	31	1	29	28	31	48

Financial Summary

Statewide Database Special Sorts for Crops

Farm Business Management Combined Database

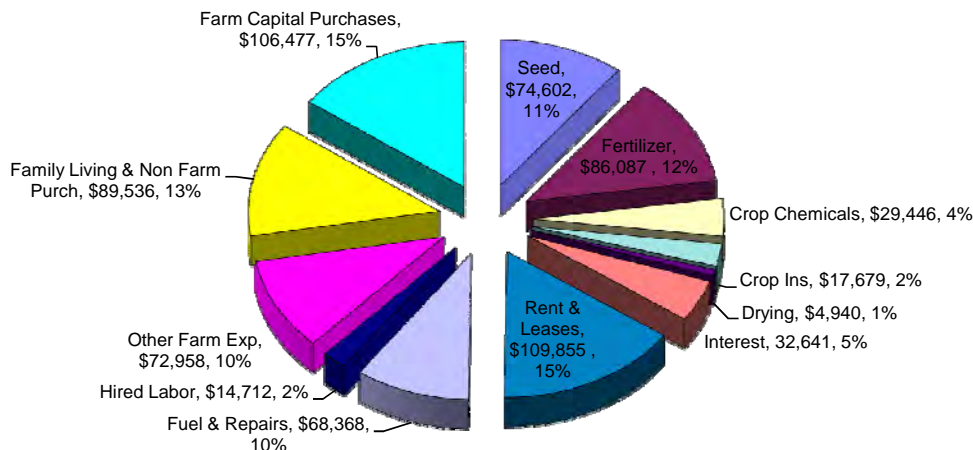
(Farms Sorted By Total Crop Acres)

	Avg. Of	101 -	251 -	501 -	1,001 -	1,501 -	2,001 -	5,001 -
	All Farms	250	500	1,000	1,500	2,000	5,000	10,000
Number of farms	1282	111	212	387	223	114	178	7
Income Statement								
Gross cash farm income	656,020	111,895	242,964	457,222	724,264	1,021,934	1,561,493	3,733,718
Total cash farm expense	511,288	86,157	186,066	356,771	560,872	811,784	1,212,537	2,804,978
Net cash farm income	144,732	25,738	56,898	100,452	163,391	210,150	348,956	928,740
Inventory change	131,653	14,004	45,317	87,765	159,715	212,633	325,298	696,797
Depreciation	-43,226	-7,660	-17,012	-30,689	-50,171	-72,365	-96,222	-246,239
Net farm income from operations	233,158	32,082	85,203	157,528	272,935	350,418	578,032	1,379,298
Gain or loss on capital sales	1,676	114	3,223	906	2,239	205	3,289	-
Average net farm income	234,835	32,196	88,426	158,434	275,175	350,623	581,321	1,379,298
Median net farm income	161,229	24,185	80,332	151,977	247,431	320,561	544,405	1,140,998
Profitability (cost)								
Rate of return on assets	13.90%	7.20%	11.40%	12.50%	14.00%	14.20%	16.10%	13.60%
Rate of return on equity	20.80%	10.00%	17.20%	18.60%	20.50%	21.40%	24.30%	19.40%
Operating profit margin	28.70%	22.60%	27.90%	27.40%	29.70%	28.50%	29.90%	29.80%
Asset turnover rate	48.40%	31.70%	41.10%	45.40%	47.10%	49.80%	53.90%	45.60%
Liquidity & Repayment (end of year)								
Current assets	654,015	89,836	228,927	440,980	759,800	1,015,246	1,587,723	4,256,730
Current liabilities	300,872	41,129	100,806	210,547	335,547	461,811	737,781	1,734,687
Current ratio	2.17	2.18	2.27	2.09	2.26	2.2	2.15	2.45
Working capital	353,144	48,707	128,121	230,433	424,253	553,436	849,942	2,522,044
Working capital to gross inc	46.30%	40.60%	46.10%	43.90%	49.20%	46.70%	46.50%	57.80%
Term debt coverage ratio	3.55	2.24	2.81	3.22	3.5	3.54	4.18	5.02
Replacement coverage ratio	2.85	1.78	2.18	2.51	2.81	2.81	3.43	4.29
Solvency (end of year at cost)								
Number of farms	1,282	111	212	387	223	114	178	7
Total farm assets	1,691,824	398,229	712,353	1,226,216	1,968,644	2,550,837	3,706,668	10,011,816
Total farm liabilities	714,997	211,683	333,769	533,759	795,483	1,088,890	1,502,166	3,478,607
Total assets	1,896,303	565,487	905,011	1,425,231	2,180,518	2,768,508	3,959,088	10,197,559
Total liabilities	767,738	272,499	380,337	576,506	851,626	1,150,017	1,573,133	3,639,701
Net worth	1,128,564	292,989	524,674	848,725	1,328,892	1,618,491	2,385,955	6,557,858
Net worth change	199,648	39,909	83,470	131,265	230,958	294,722	485,804	1,218,298
Farm debt to asset ratio	42%	53%	47%	44%	40%	43%	41%	35%
Total debt to asset ratio	40%	48%	42%	40%	39%	42%	40%	36%
Solvency (end of year at market)								
Number of farms	1,282	111	212	387	223	114	178	7
Total farm assets	2,189,957	611,342	1,040,164	1,637,655	2,563,500	3,246,633	4,522,749	12,072,901
Total farm liabilities	951,468	269,279	442,905	707,298	1,076,442	1,436,168	2,003,095	4,851,050
Total assets	2,432,592	806,112	1,270,513	1,877,098	2,827,537	3,487,589	4,810,954	12,257,192
Total liabilities	1,018,604	335,327	499,023	759,163	1,150,888	1,521,763	2,103,063	5,011,847
Net worth	1,413,988	470,785	771,490	1,117,934	1,676,649	1,965,826	2,707,891	7,245,346
Net worth change	216,615	51,251	95,856	138,021	254,542	332,174	519,593	1,014,984
Farm debt to asset ratio	43%	44%	43%	43%	42%	44%	44%	40%
Total debt to asset ratio	42%	42%	39%	40%	41%	44%	44%	41%
Nonfarm Information								
Net nonfarm income	33,389	45,950	37,229	33,289	30,617	22,284	22,424	46,179
Farms reporting living expenses	379	37	76	125	72	31	21	-
Total family living expense	57,642	47,220	51,227	56,131	61,176	71,393	79,966	-
Total living, invest, cap. purch	89,536	60,444	79,802	81,414	104,896	102,700	171,011	-
Crop Acres								
Total acres owned	305	115	177	229	367	432	586	1,213
Total crop acres	1,114	175	388	737	1,226	1,715	2,867	6,680
Total crop acres owned	282	88	156	211	335	396	587	1,349
Total crop acres cash rented	801	87	214	496	860	1,278	2,212	5,331
Total crop acres share rented	31	-	18	30	32	41	68	-

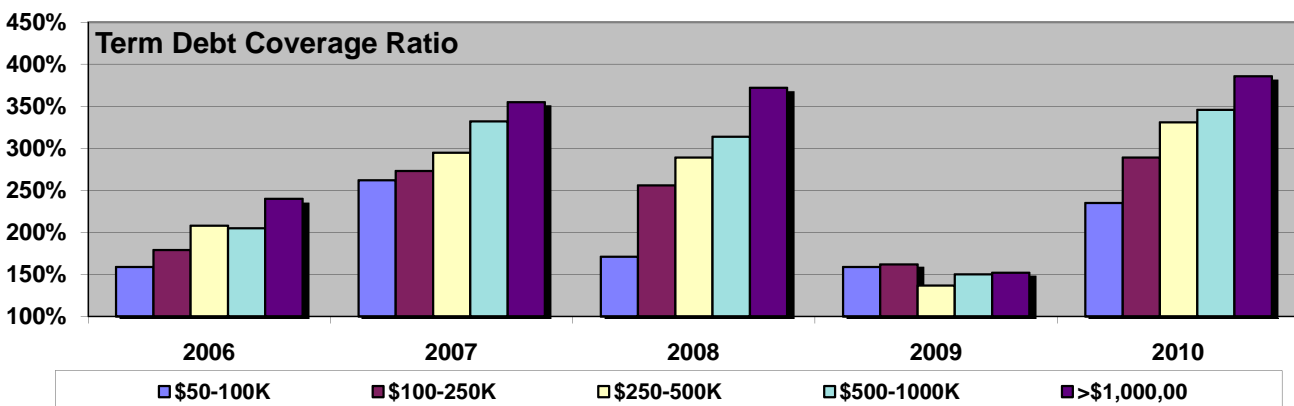
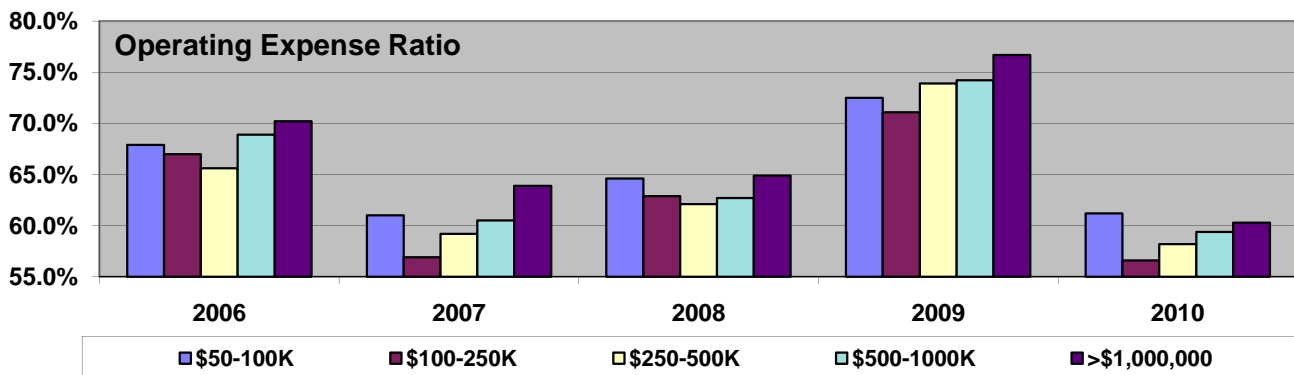
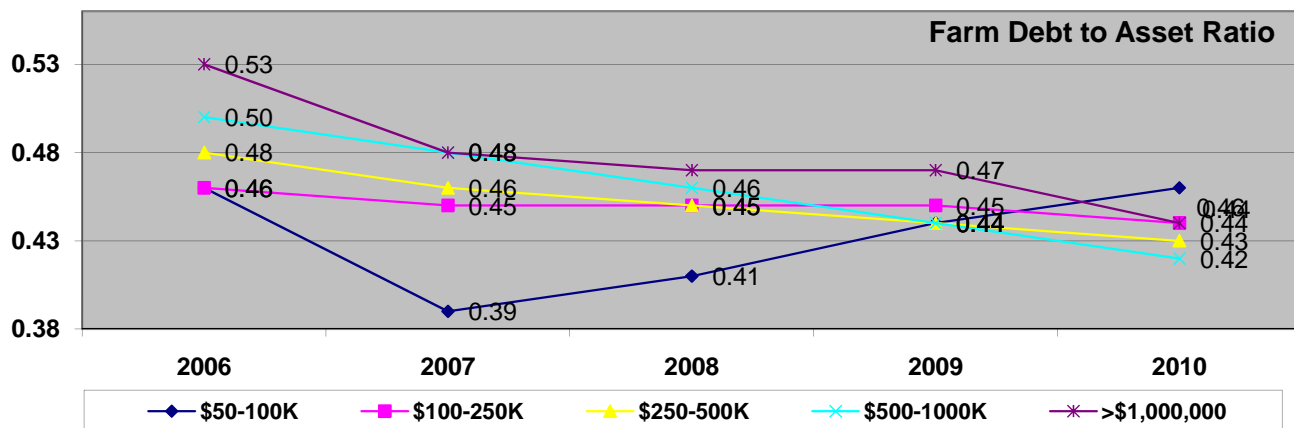
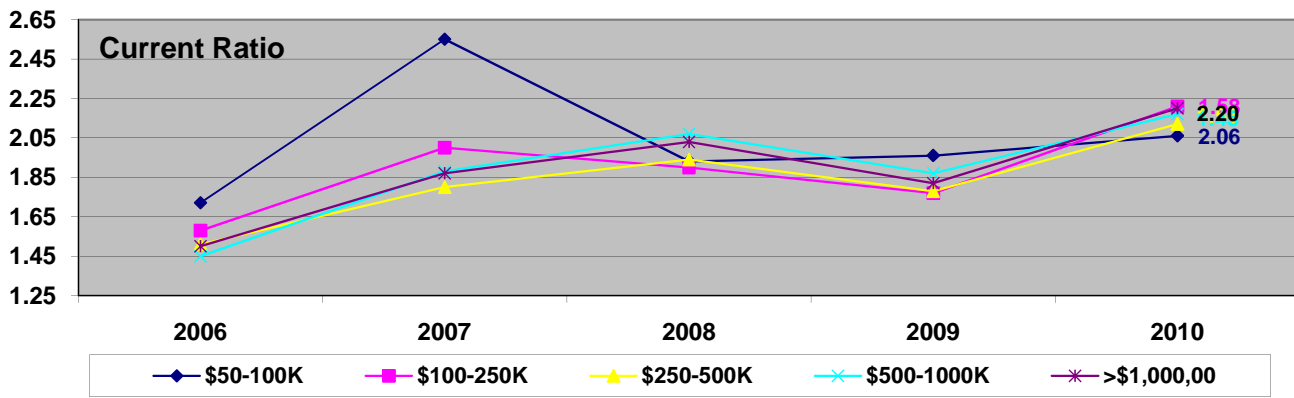
Financial Standards Measures
Statewide Database Special Sorts for Crops
Farm Business Management Combined Database
(Farms Sorted By Gross Farm Income)

	Avg. Of All Farms	50,001 - 100,000	100,001 - 250,000	250,001 - 500,000	500,001 - 1,000,000	Over 1,000,000
Number of farms	1282	66	205	353	395	235
Liquidity						
Current ratio	2.17	2.06	2.21	2.12	2.17	2.2
Working capital	353,144	33,713	90,749	200,568	384,313	888,587
Working capital to gross inc	46.30%	39.70%	43.50%	45.50%	45.90%	47.30%
Solvency (market)						
Farm debt to asset ratio	43%	46%	44%	43%	42%	44%
Farm equity to asset ratio	57%	54%	56%	57%	58%	56%
Farm debt to equity ratio	0.77	0.87	0.79	0.77	0.73	0.8
Profitability (cost)						
Rate of return on farm assets	13.90%	5.90%	11.50%	12.70%	13.60%	15.10%
Rate of return on farm equity	20.80%	7.90%	17.90%	19.40%	19.90%	22.70%
Operating profit margin	28.70%	20.60%	28.10%	28.50%	28.40%	29.10%
Net farm income	234,835	20,078	66,082	139,668	257,537	574,342
EBIDTA	308,933	32,959	90,428	184,563	340,451	745,724
Repayment Capacity						
Capital debt repayment capacity	254,588	34,109	73,429	152,250	275,334	620,247
Capital debt repayment margin	182,894	19,578	47,994	106,270	195,848	459,489
Replacement margin	165,201	15,861	41,617	93,238	174,486	425,410
Term debt coverage ratio	3.55	2.35	2.89	3.31	3.46	3.86
Replacement coverage ratio	2.85	1.87	2.31	2.58	2.73	3.18
Efficiency						
Asset turnover rate (cost)	48.40%	28.60%	40.90%	44.60%	47.80%	51.90%
Operating expense ratio	59.50%	61.20%	56.60%	58.20%	59.40%	60.30%
Depreciation expense ratio	5.70%	5.90%	5.60%	5.80%	5.80%	5.50%
Interest expense ratio	4.30%	9.20%	6.10%	5.10%	4.20%	3.80%
Net farm income ratio	30.80%	23.60%	31.70%	31.70%	30.70%	30.60%

Average Dollars Spent by a Crop Farm totals \$707,301 in 2010



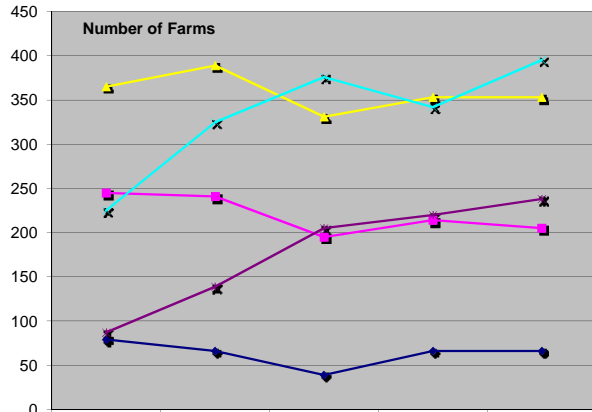
Financial Summary
Statewide Database Special Sorts for Crops
Farm Business Management Combined Database



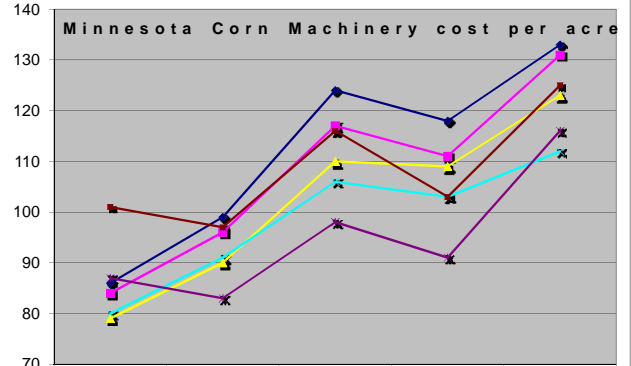
Financial Summary

Statewide Database Special Sorts for Crops

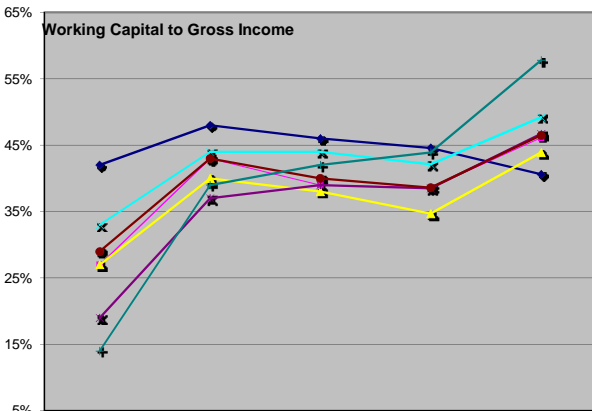
Farm Business Management Combined Database



	2006	2007	2008	2009	2010
◆ \$50-100K	79	66	39	66	66
◆ \$100-250K	245	241	195	214	205
◆ \$250-500K	365	389	331	353	353
◆ \$500-1000K	225	325	376	342	395
◆ >\$1,000,00	87	139	205	220	238

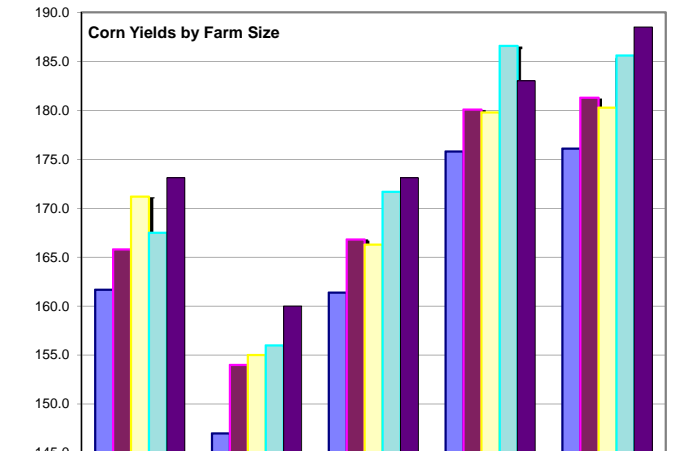


	2006	2007	2008	2009	2010
◆ 101-250	86	99	124	118	133
◆ 251-500	84	96	117	111	131
◆ 501-1000	79	90	110	109	123
◆ 1001-1500	80	91	106	103	112
◆ 1501-2000	87	83	98	91	116
◆ 2001-5000	101	97	116	103	125



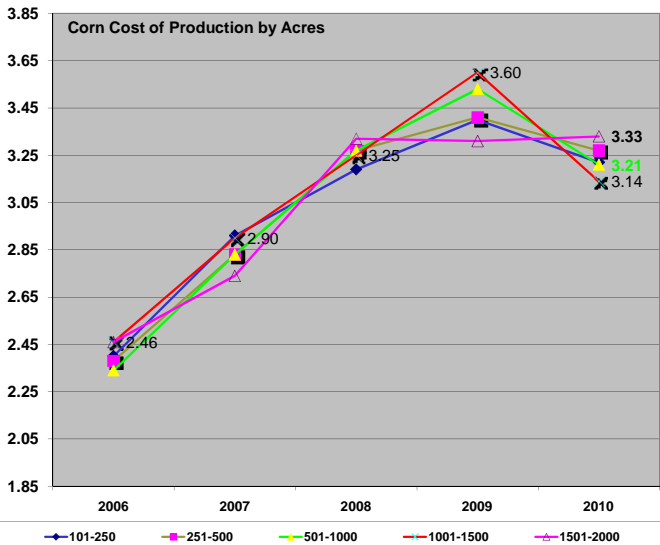
	2006	2007	2008	2009	2010
◆ 101-250	42%	48%	46%	45%	41%
◆ 251-500	27%	43%	39%	39%	46%
◆ 501-1000	27%	40%	38%	35%	44%
◆ 1001-1500	33%	44%	44%	42%	49%
◆ 1501-2000	19%	37%	39%	39%	47%
◆ 2001-5000	29%	43%	40%	39%	47%
◆ 5001-10000	14%	39%	42%	44%	58%

Corn Yields by Farm Size

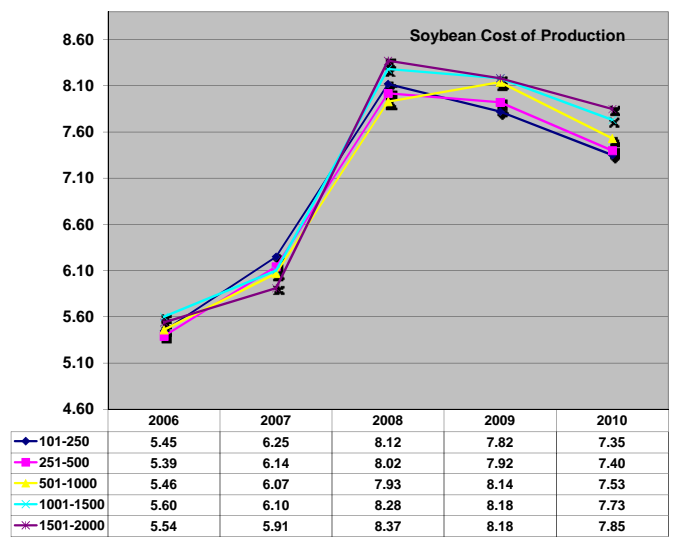


	2006	2007	2008	2009	2010
◆ 101-250	161.7	147.0	161.4	175.8	176.1
◆ 251-500	165.8	154.0	166.8	180.1	181.3
◆ 501-1000	171.2	155.0	166.3	179.8	180.3
◆ 1001-1500	167.5	156.0	171.7	186.6	185.6
◆ 1501-2000	173.1	160.0	173.1	183.0	188.5

Corn Cost of Production by Acres



Soybean Cost of Production



	2006	2007	2008	2009	2010
◆ 101-250	5.45	6.25	8.12	7.82	7.35
◆ 251-500	5.39	6.14	8.02	7.92	7.40
◆ 501-1000	5.46	6.07	7.93	8.14	7.53
◆ 1001-1500	5.60	6.10	8.28	8.18	7.73
◆ 1501-2000	5.54	5.91	8.37	8.18	7.85